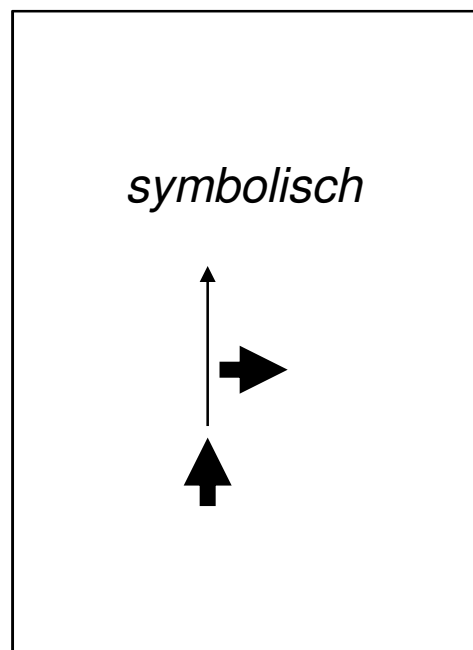
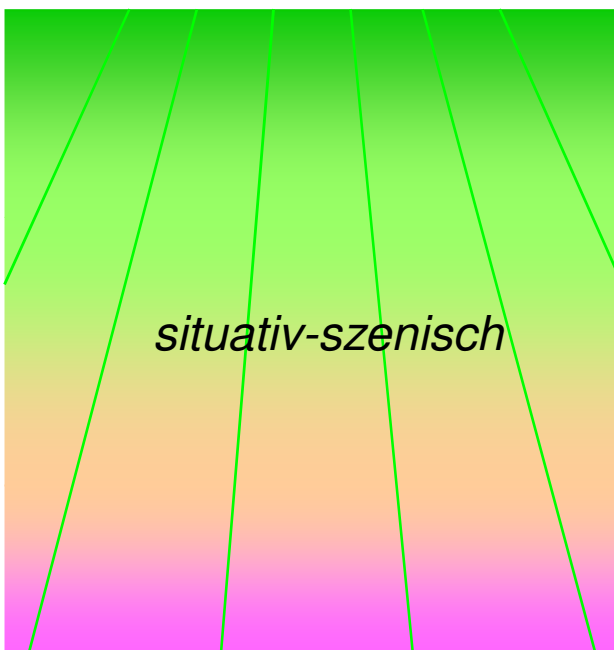
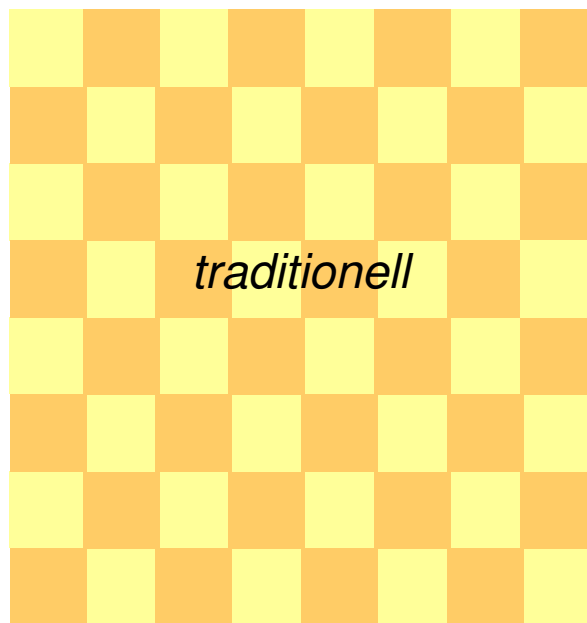
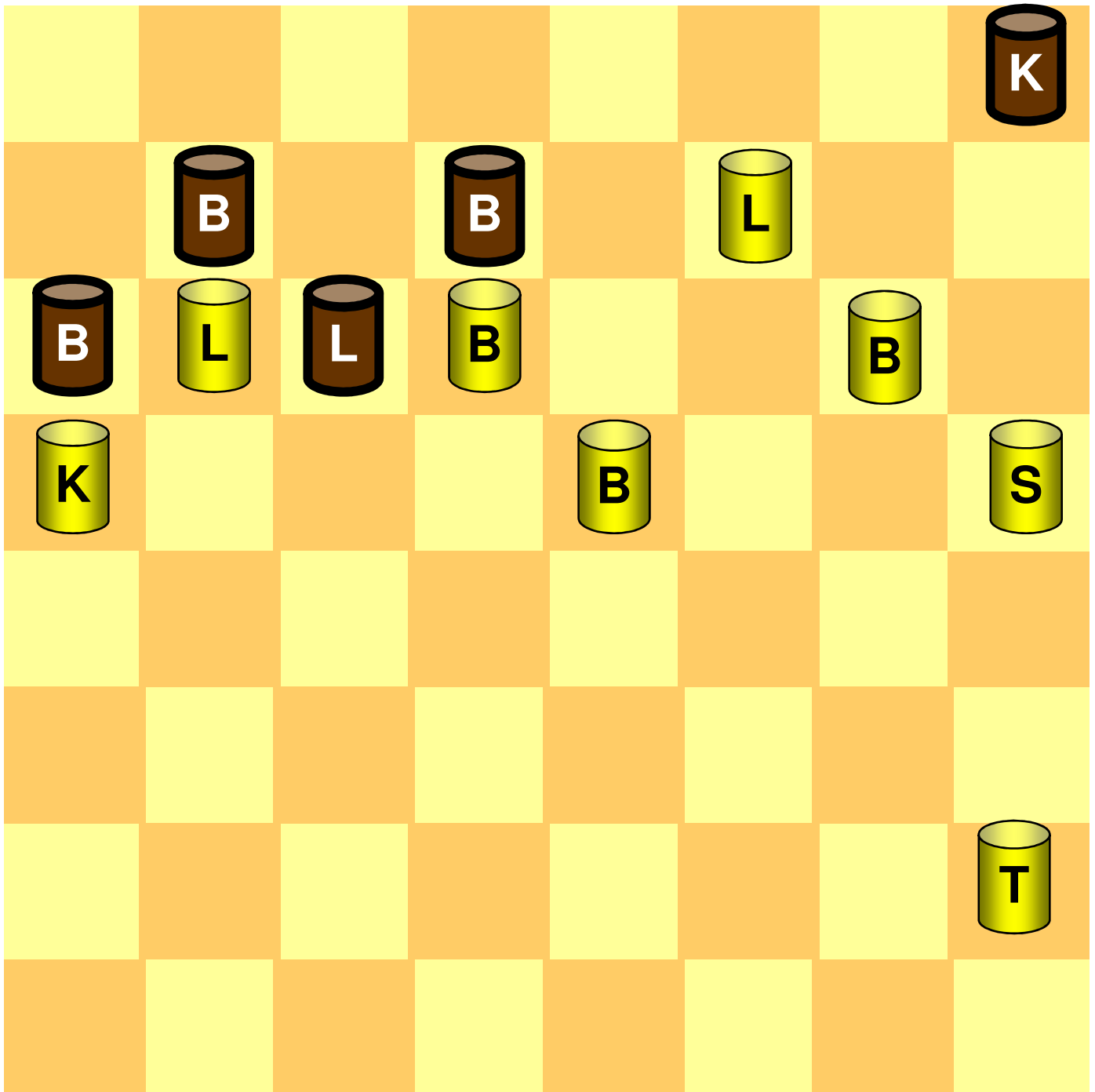


Schachvisualisierung

*Portius, Schachspielkunst, 1920¹⁴, Seite 128,
Aufgaben in zwei Zügen II (Verfasser: Th. Herlin)*

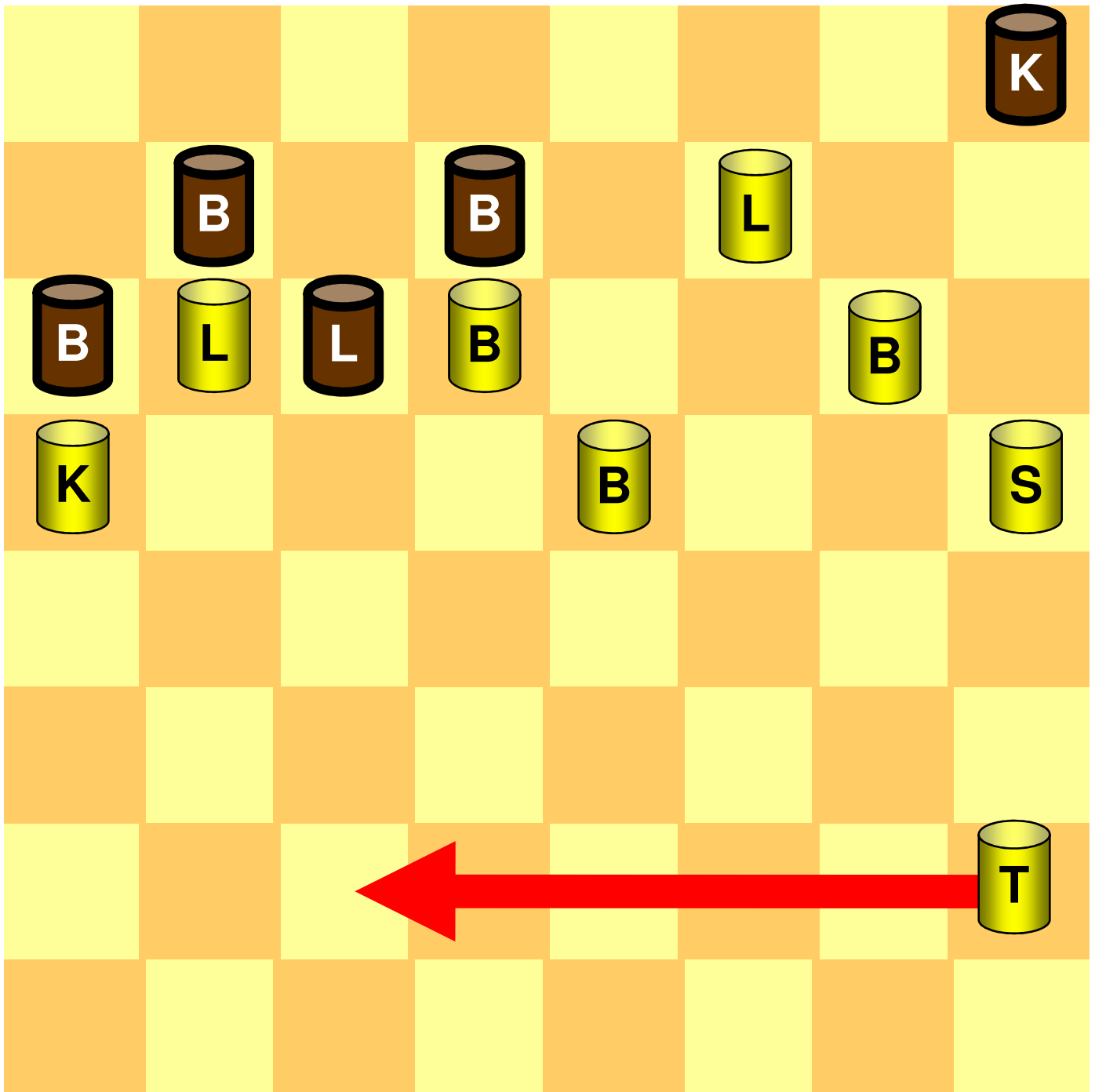


Aufgabe in zwei Zügen



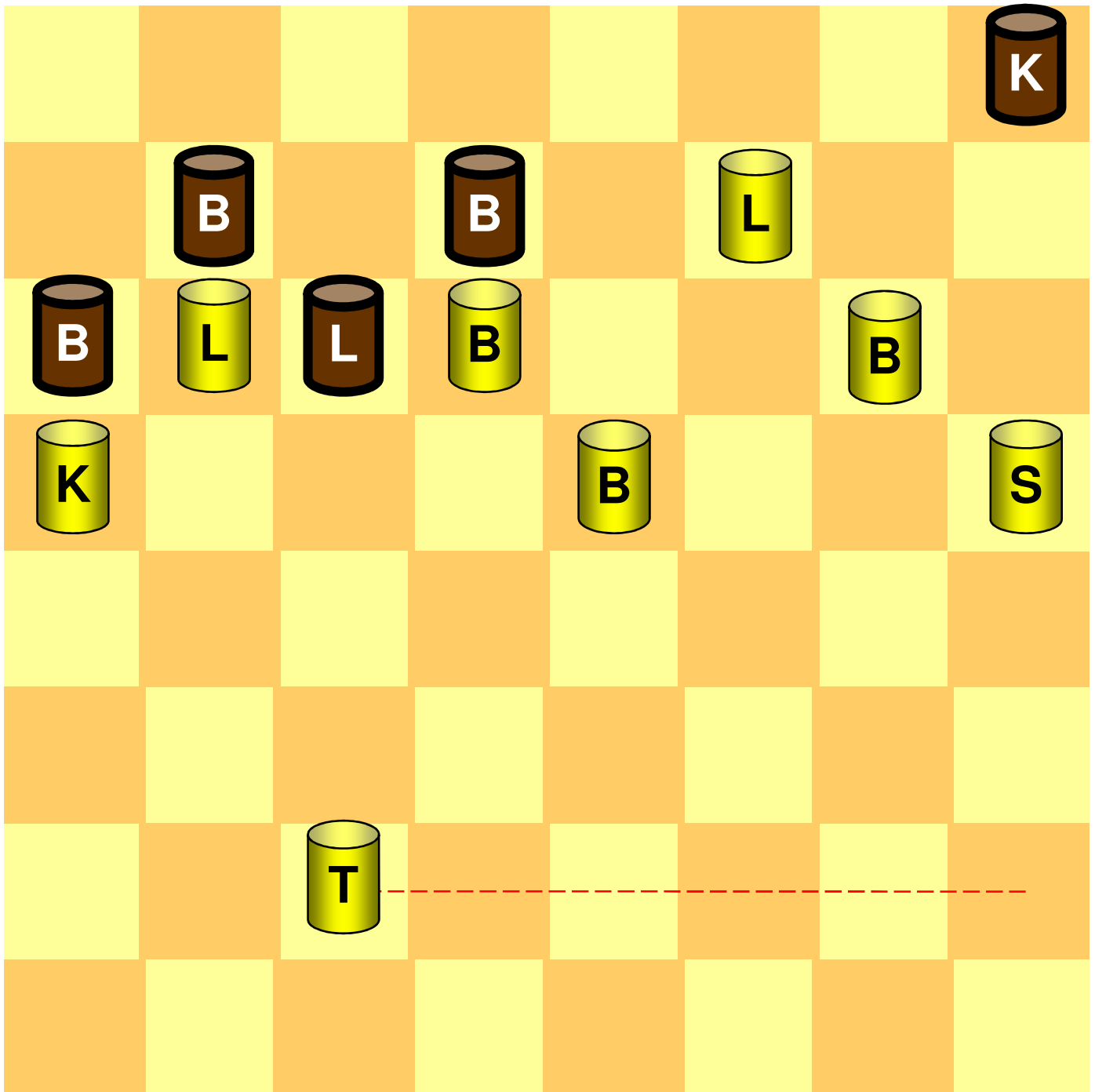
*Portius, Schachspielkunst, 1920¹⁴, Seite 128,
Aufgaben in zwei Zügen II (Verfasser: Th. Herlin)*

Aufgabe in zwei Zügen



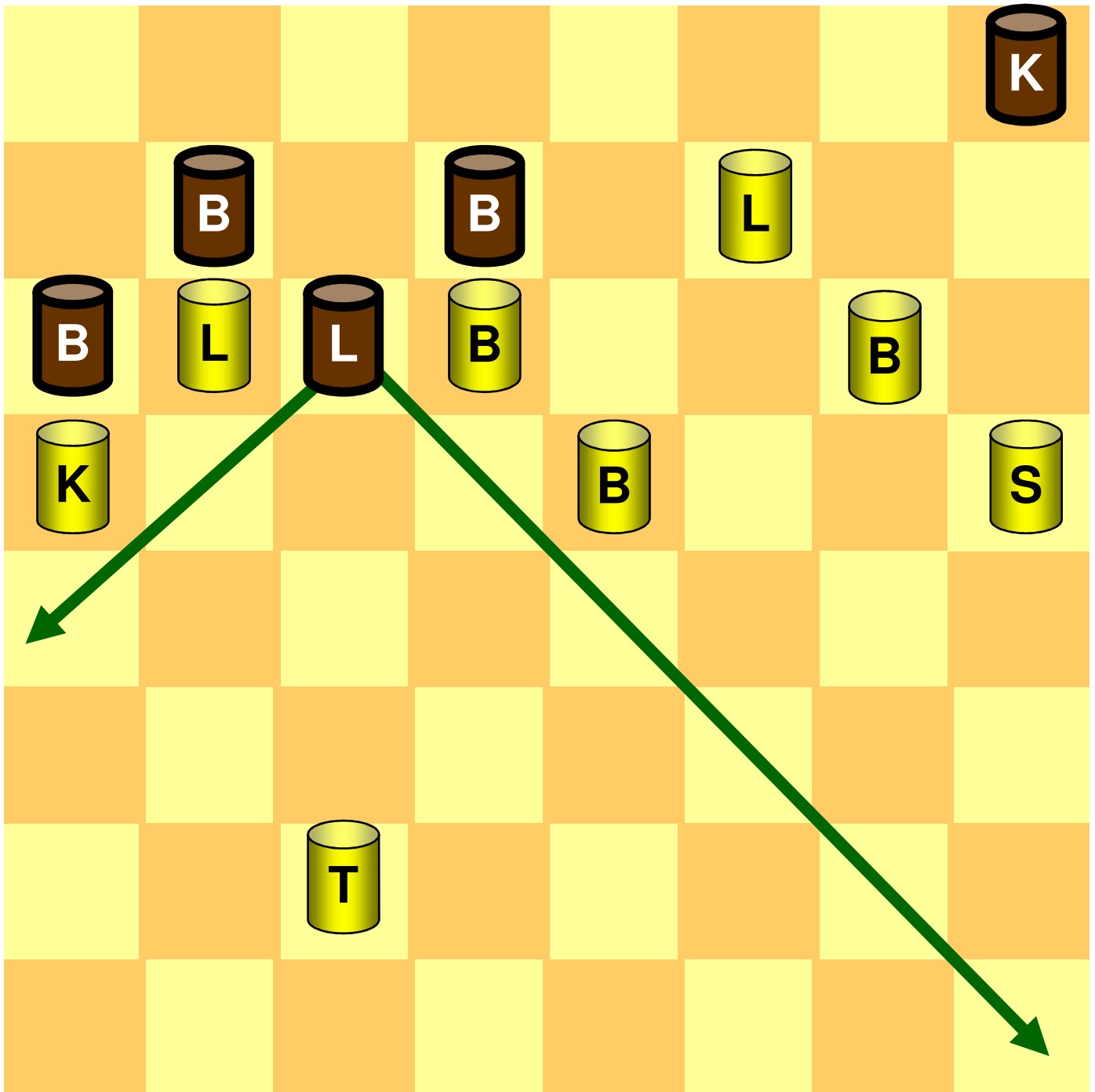
*Portius, Schachspielkunst, 1920¹⁴, Seite 128,
Aufgaben in zwei Zügen II (Verfasser: Th. Herlin)*

Aufgabe in zwei Zügen



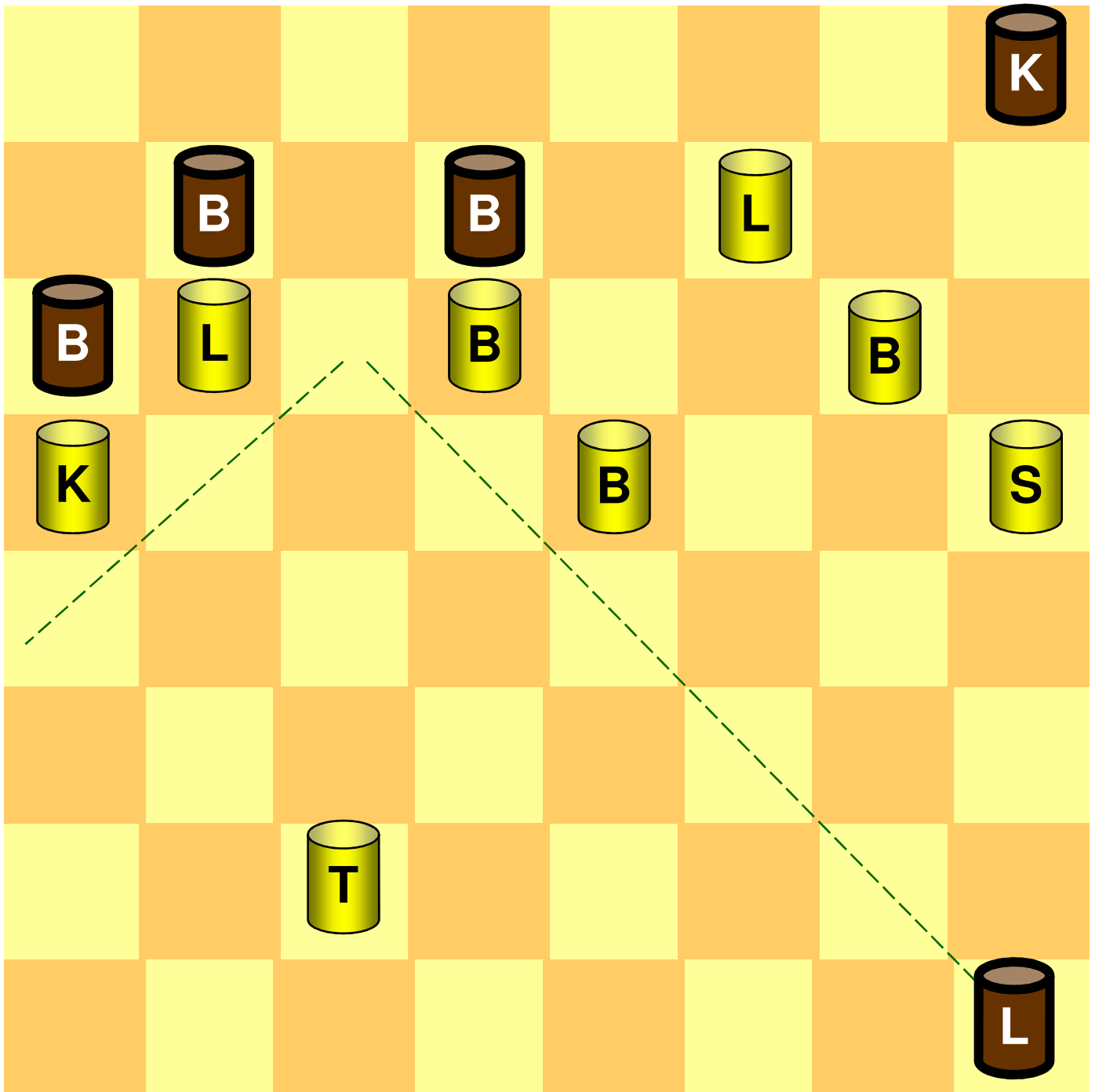
*Portius, Schachspielkunst, 1920¹⁴, Seite 128,
Aufgaben in zwei Zügen II (Verfasser: Th. Herlin)*

Aufgabe in zwei Zügen



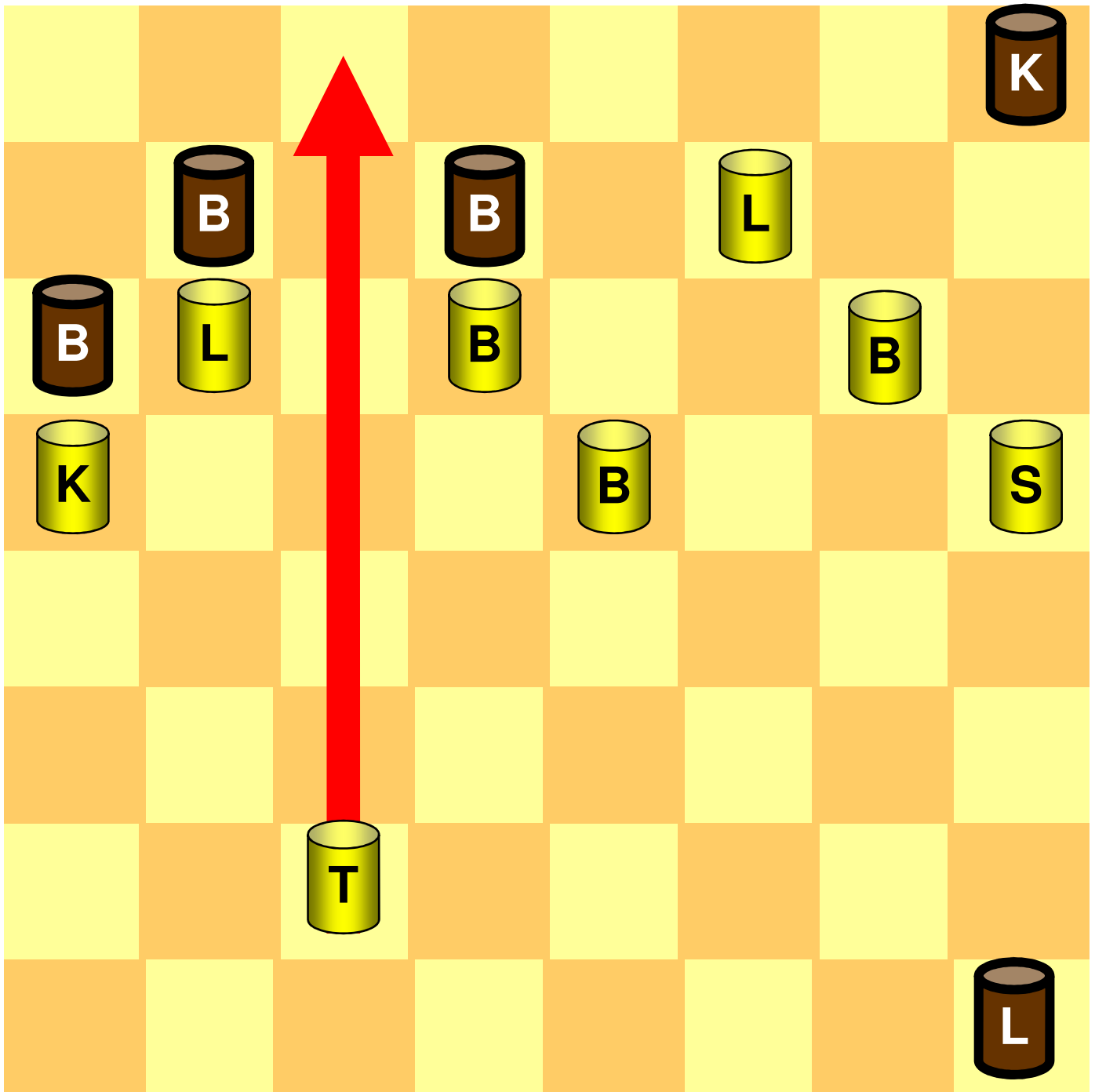
*Portius, Schachspielkunst, 1920¹⁴, Seite 128,
Aufgaben in zwei Zügen II (Verfasser: Th. Herlin)*

Aufgabe in zwei Zügen



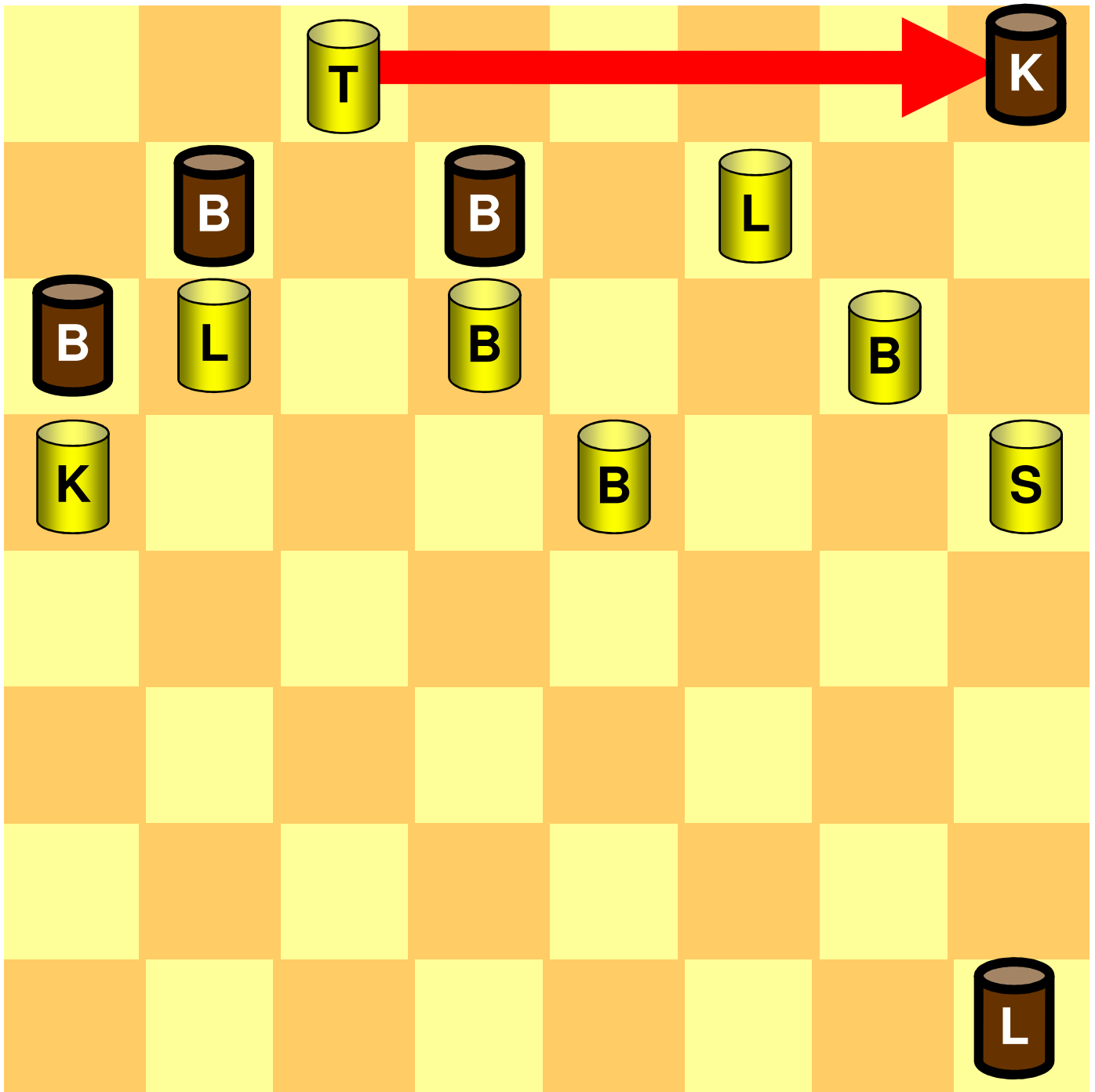
*Portius, Schachspielkunst, 1920¹⁴, Seite 128,
Aufgaben in zwei Zügen II (Verfasser: Th. Herlin)*

Aufgabe in zwei Zügen



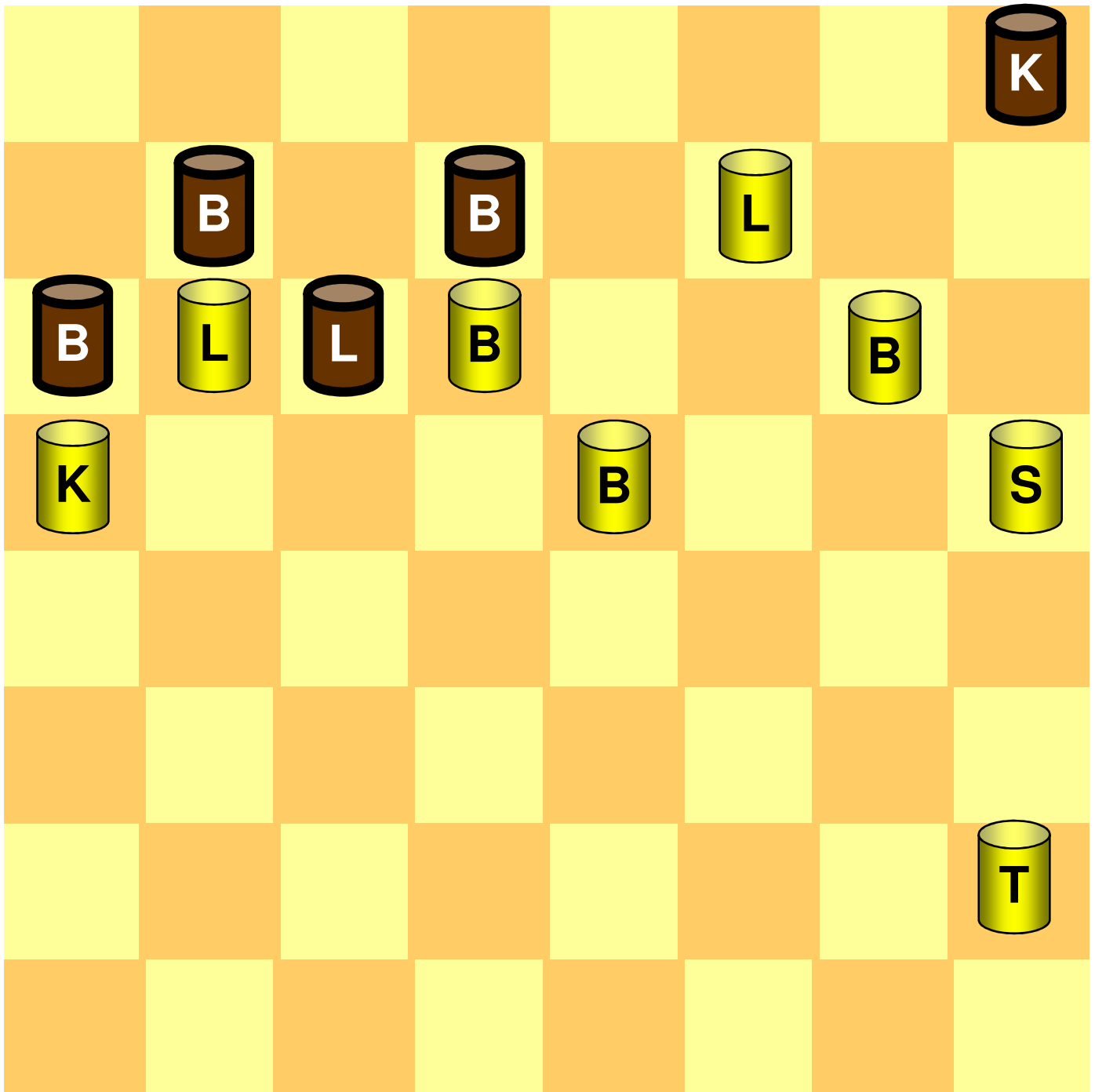
*Portius, Schachspielkunst, 1920¹⁴, Seite 128,
Aufgaben in zwei Zügen II (Verfasser: Th. Herlin)*

Aufgabe in zwei Zügen



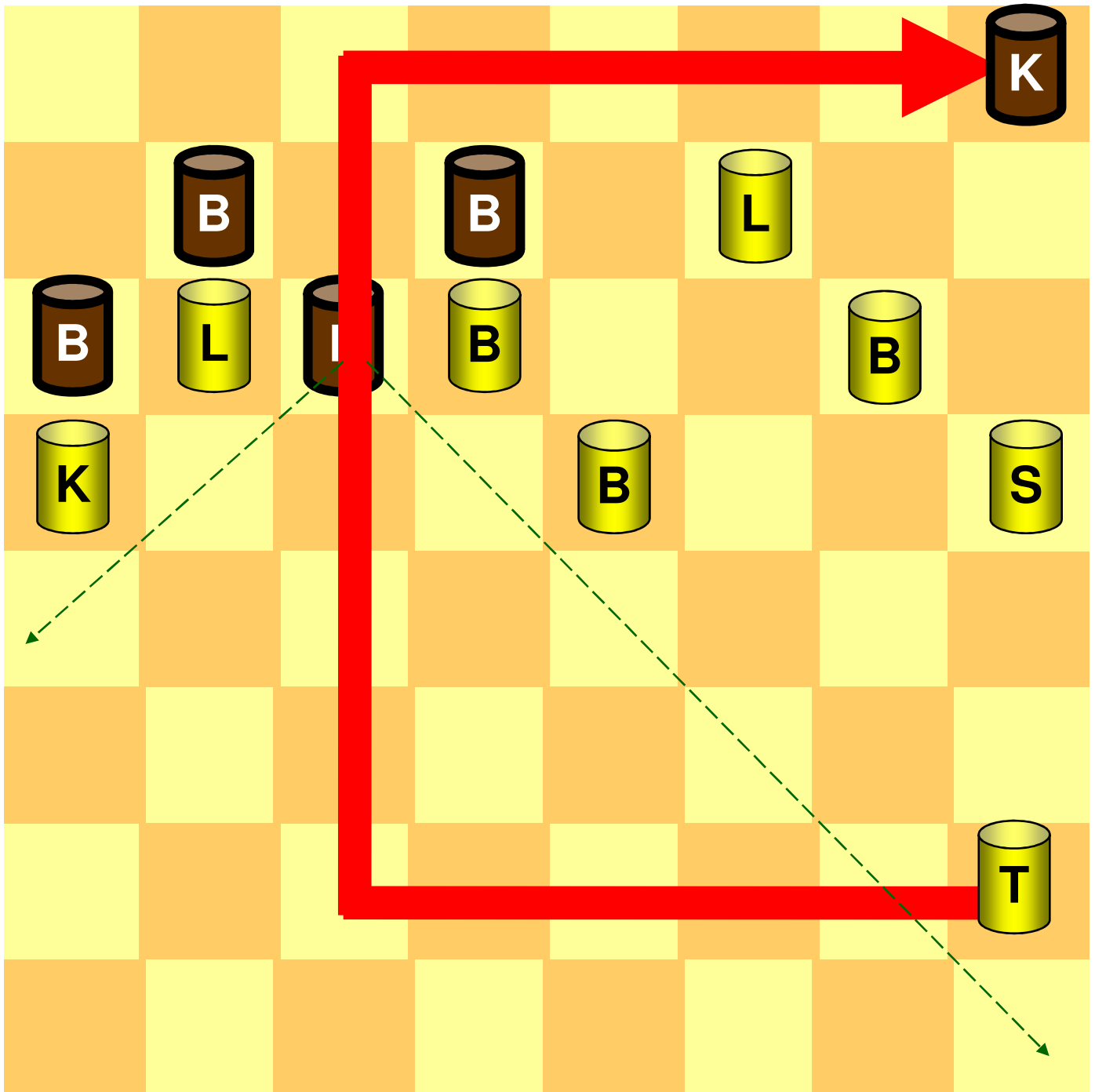
*Portius, Schachspielkunst, 1920¹⁴, Seite 128,
Aufgaben in zwei Zügen II (Verfasser: Th. Herlin)*

Aufgabe in zwei Zügen

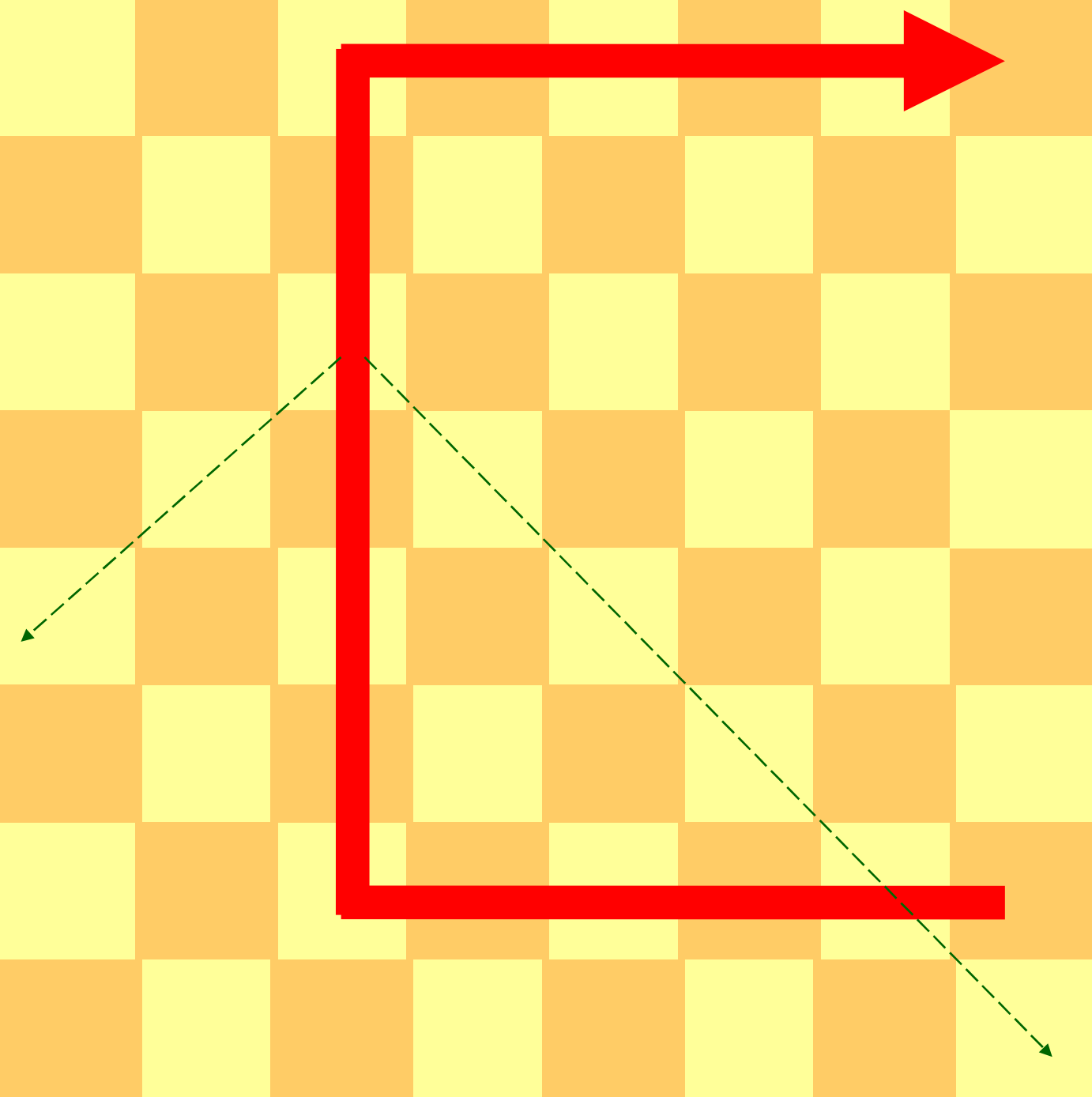


*Portius, Schachspielkunst, 1920¹⁴, Seite 128,
Aufgaben in zwei Zügen II (Verfasser: Th. Herlin)*

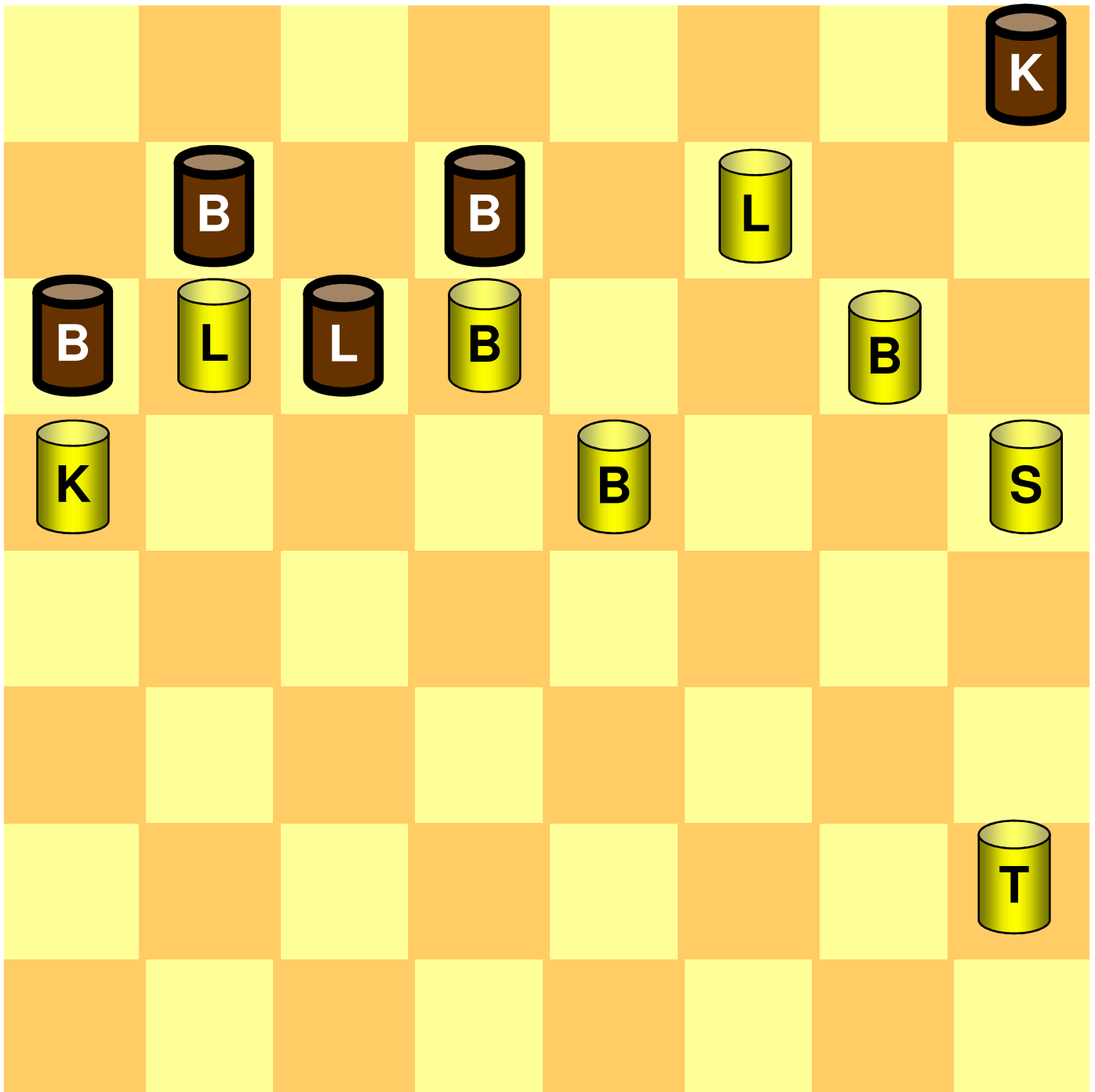
Aufgabe in zwei Zügen



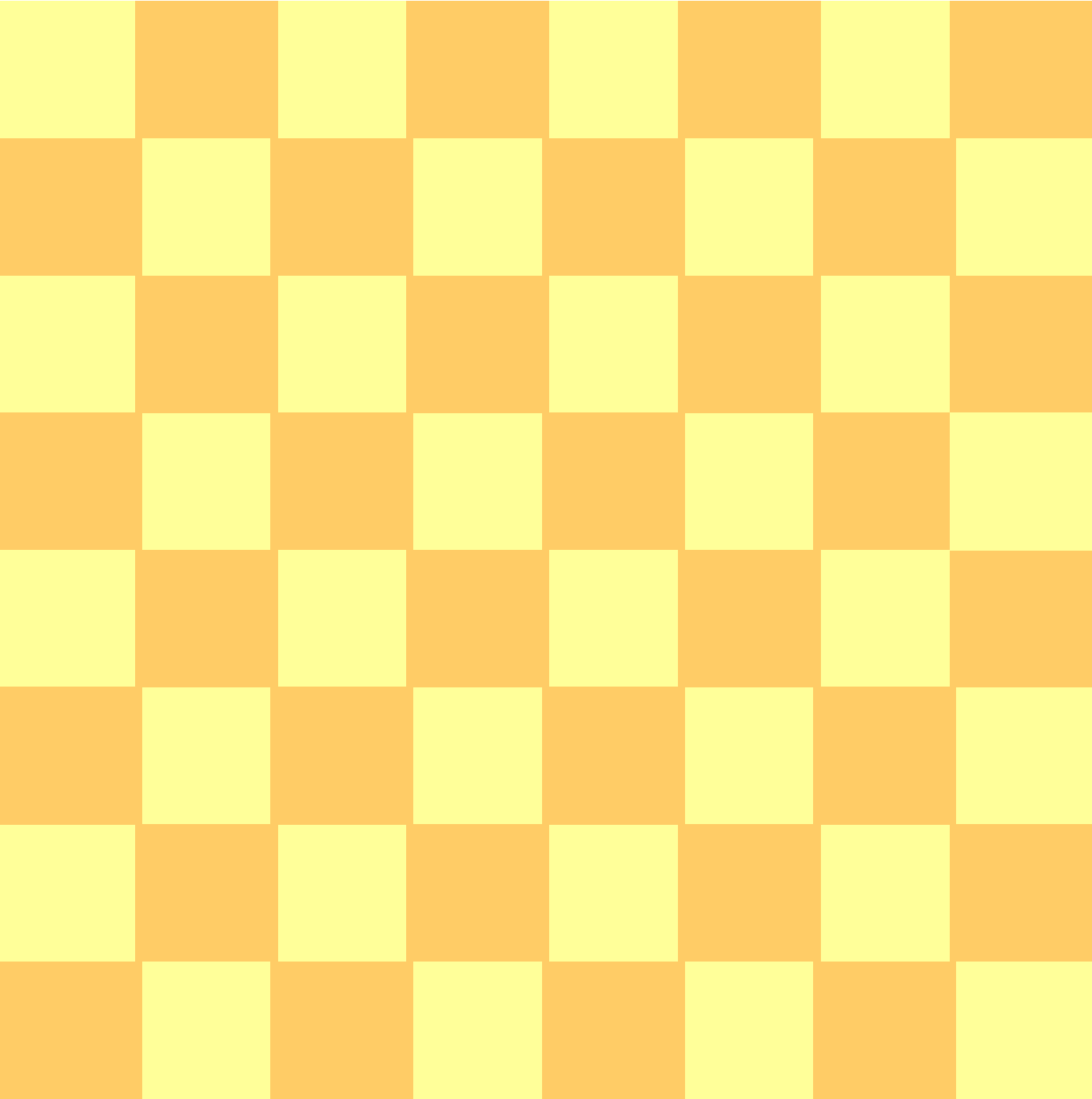
*Portius, Schachspielkunst, 1920¹⁴, Seite 128,
Aufgaben in zwei Zügen II (Verfasser: Th. Herlin)*



Aufgabe in zwei Zügen



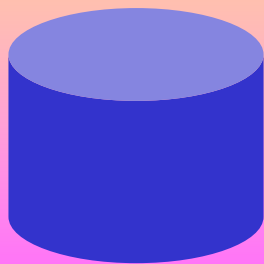
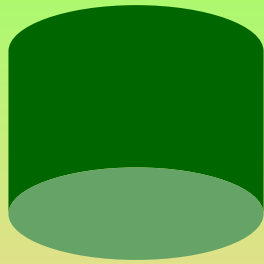
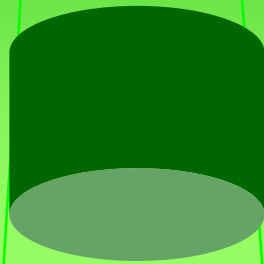
*Portius, Schachspielkunst, 1920¹⁴, Seite 128,
Aufgaben in zwei Zügen II (Verfasser: Th. Herlin)*



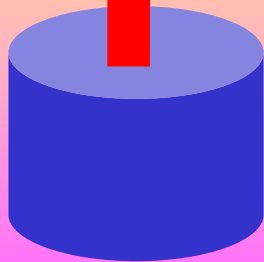
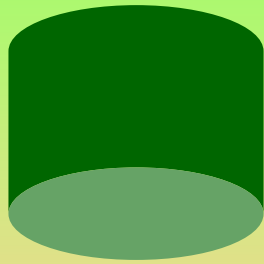
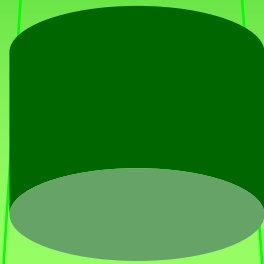
situativ-szenisch

The image features a vertical color gradient background that transitions from a bright green at the top to a vibrant pink at the bottom. Several thin, dark green diagonal lines are overlaid on the gradient, extending from the top edge towards the bottom edge. The text "situativ-szenisch" is positioned at the top center in a bold, black, sans-serif font.

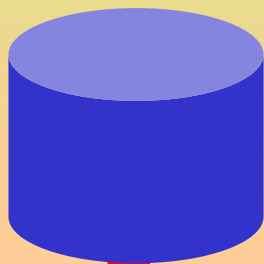
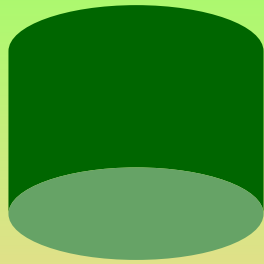
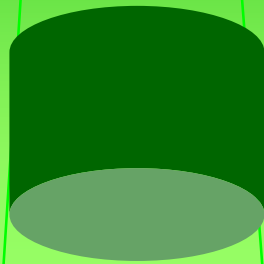
situativ-szenisch



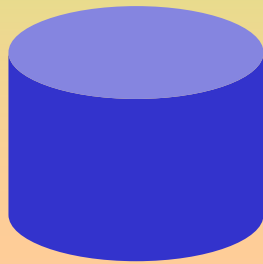
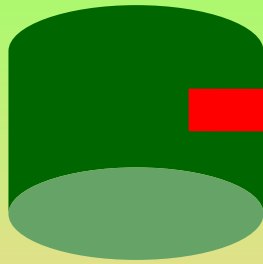
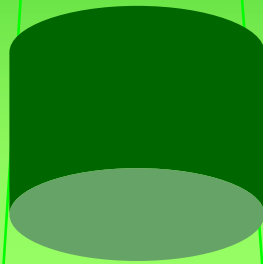
situativ-szenisch



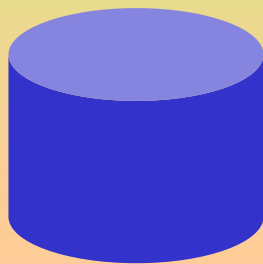
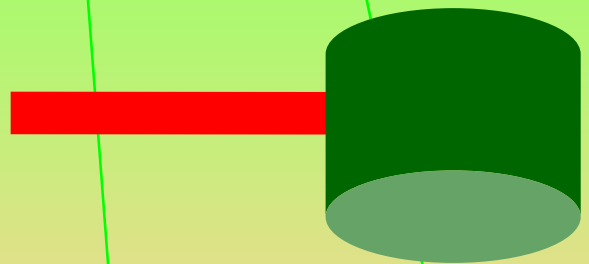
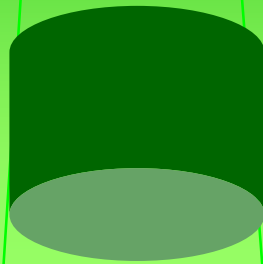
situativ-szenisch



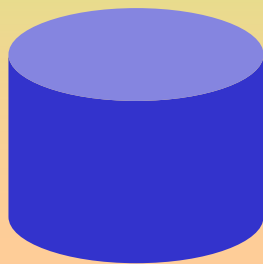
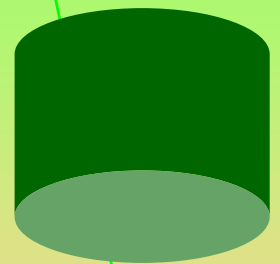
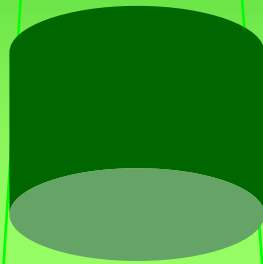
situativ-szenisch



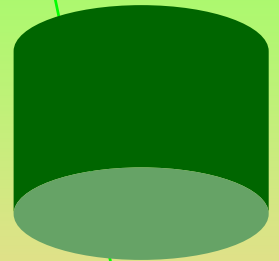
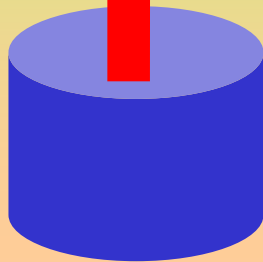
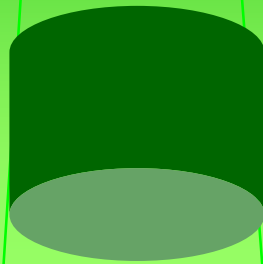
situativ-szenisch



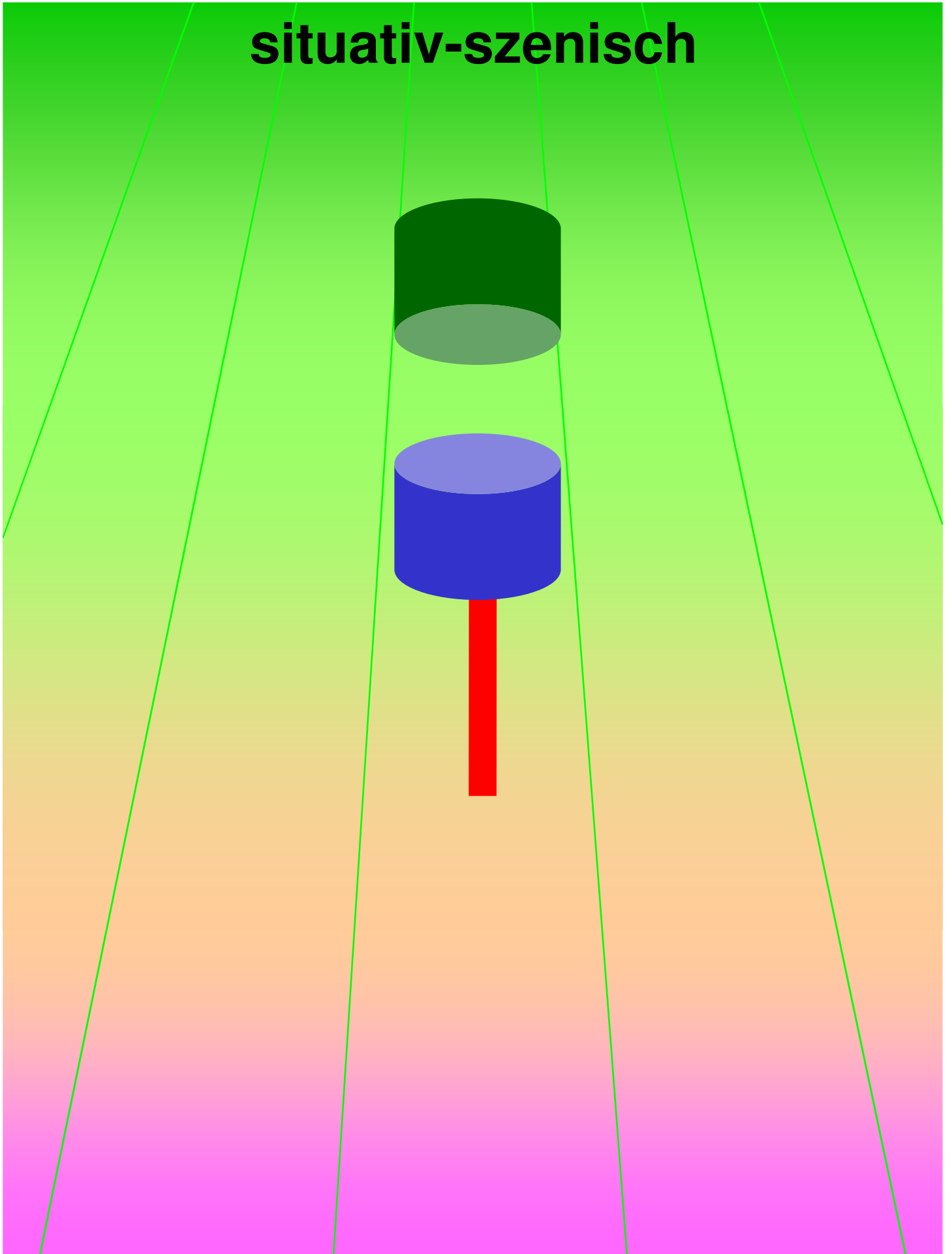
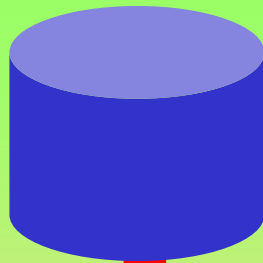
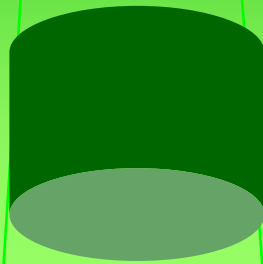
situativ-szenisch



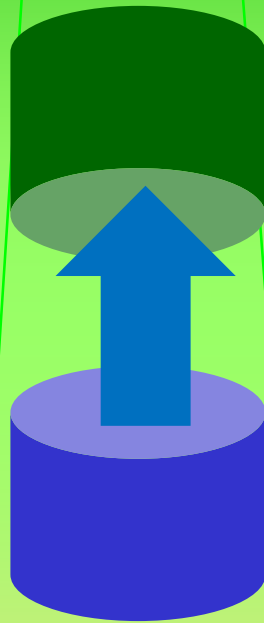
situativ-szenisch



situativ-szenisch



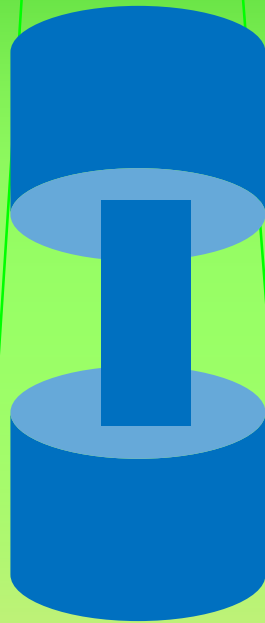
situativ-szenisch



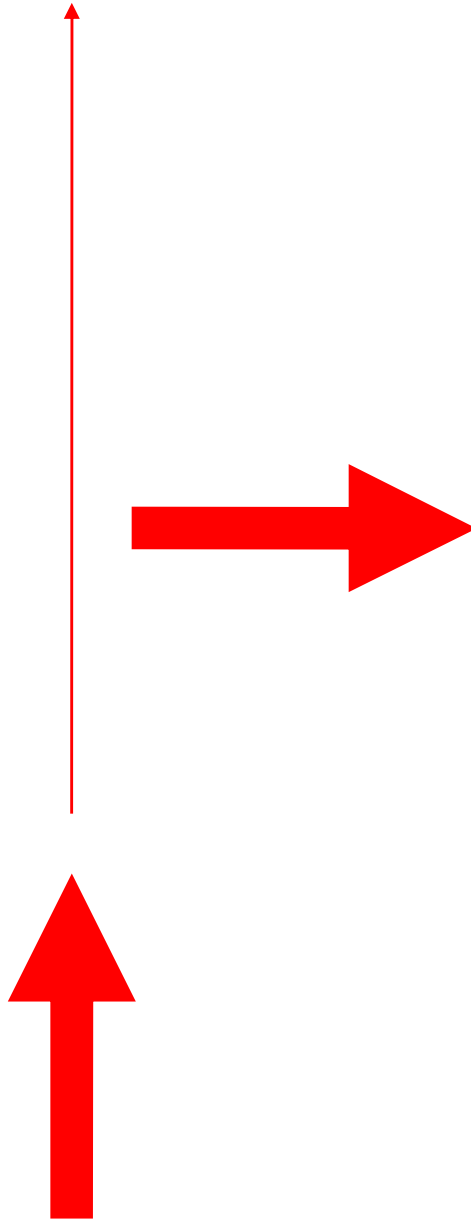
situativ-szenisch



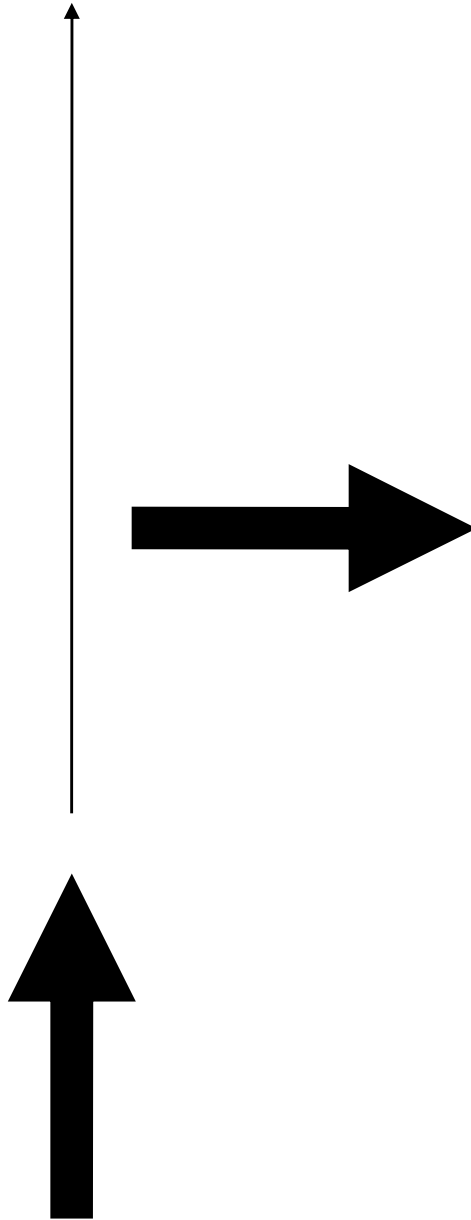
situativ-szenisch

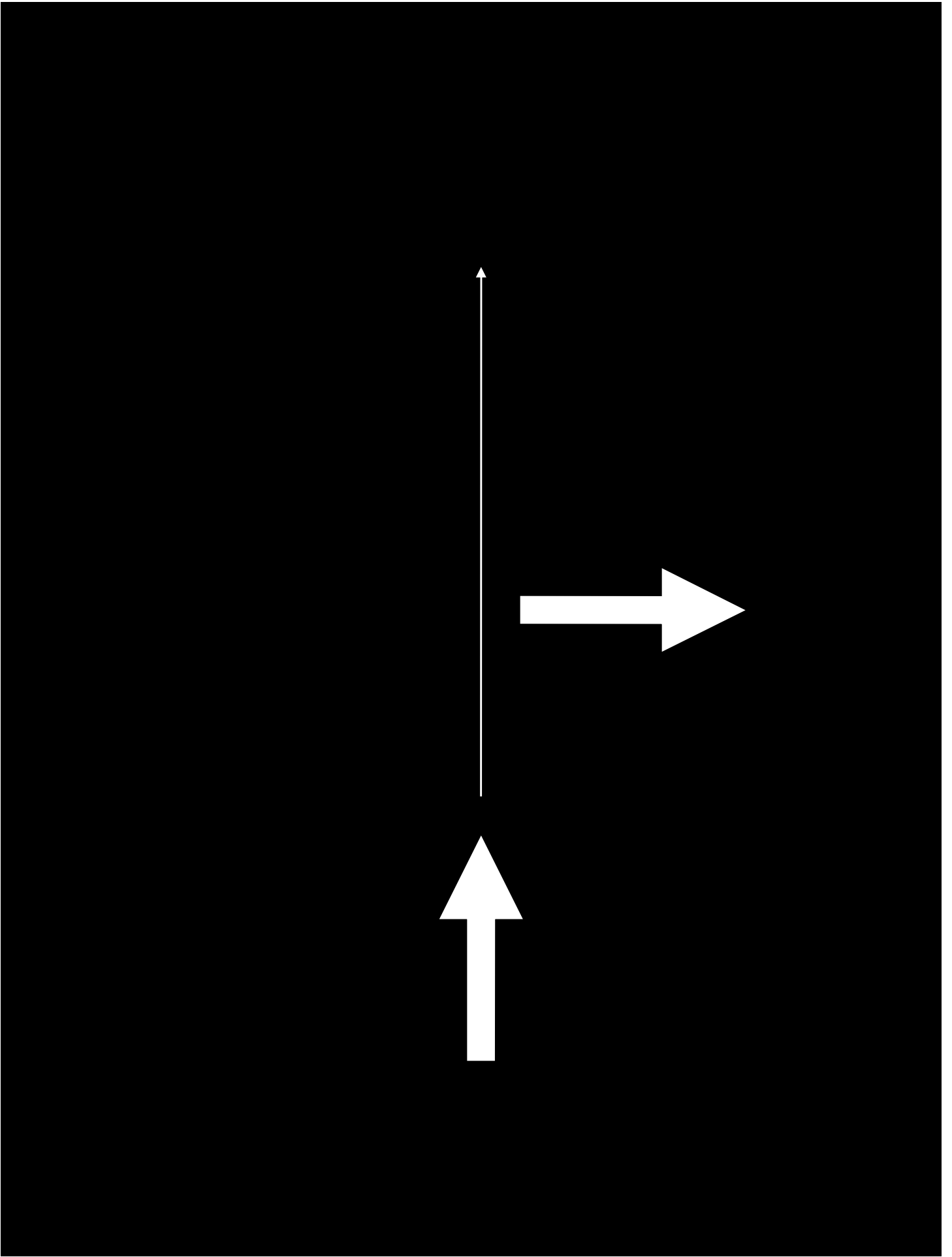


symbolisch



symbolisch





symbolisch

